

FFF Settings

Process Name:

Select Profile:

Auto-Configure for Material:

Auto-Configure for Print Quality:

General Settings

Infill Percentage:  15%  Include Raft  Generate Support

Extruder | Layer | Additions | Infill | **Support** | Temperature | Cooling | G-Code | Scripts | Other | Advanced

Support Material Generation

- Generate Support Material
- Support Extruder:
- Support Infill Percentage:  %
- Extra Inflation Distance:  mm
- Dense Support Layers:
- Dense Infill Percentage:  %
- Print Support Every:  layers

Separation From Part

- Horizontal Offset From Part:  mm
- Upper Vertical Separation Layers:
- Lower Vertical Separation Layers:

Automatic Placement

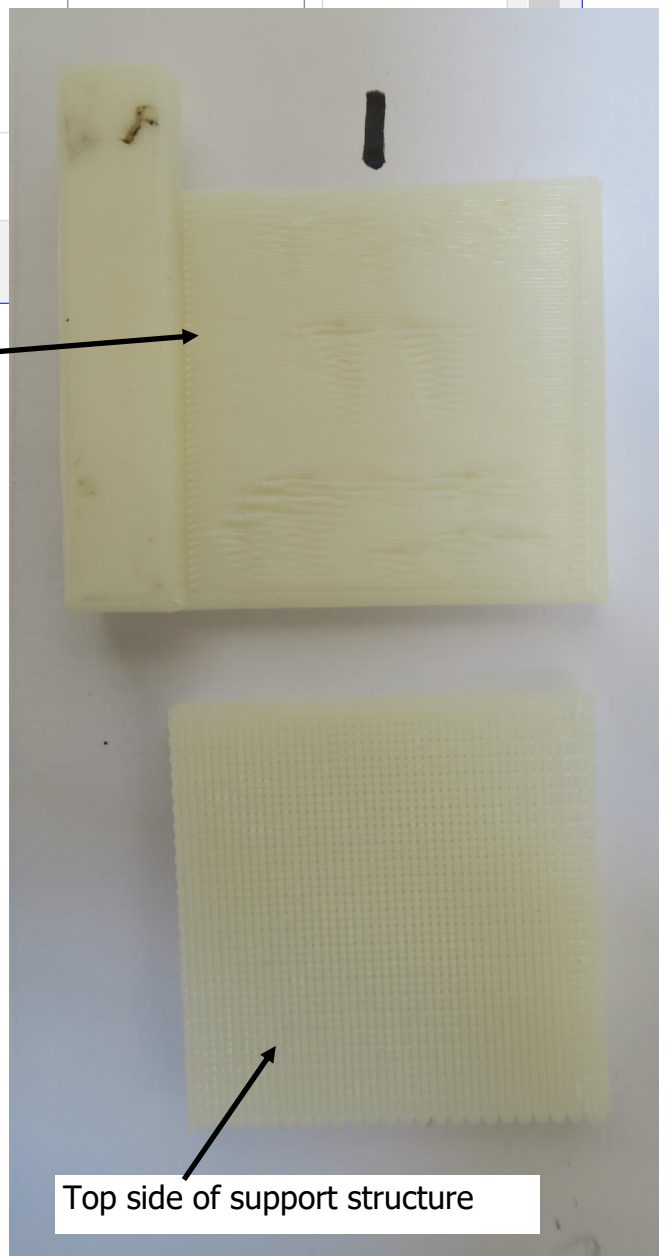
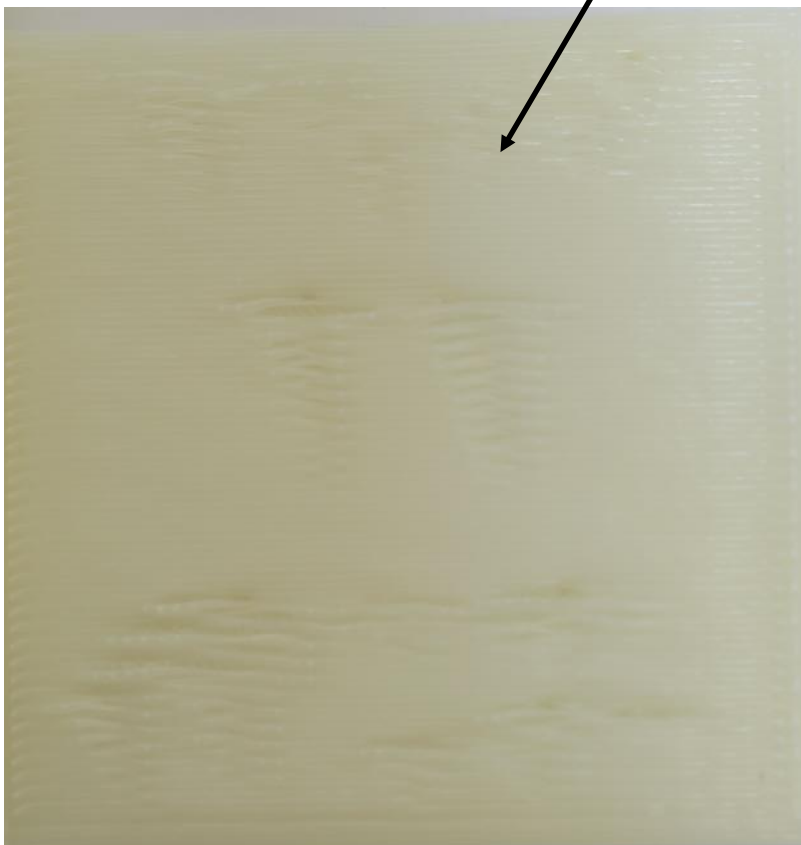
*Only used if manual support is not defined*

- Support Type:
- Support Pillar Resolution:  mm
- Max Overhang Angle:  deg

Support Infill Angles

- deg
- 
- 
- 

Underside of model, built directly on support structure



Top side of support structure

Process Name:

Select Profile:

Auto-Configure for Material

Auto-Configure for Print Quality

General Settings  
Infill Percentage:  15%  Include Raft  Generate Support

Extruder Layer Additions Infill Support Temperature Cooling G-Code Scripts Other Advanced

Support Material Generation

Generate Support Material

Support Extruder

Support Infill Percentage  %

Extra Inflation Distance  mm

Dense Support Layers

Dense Infill Percentage  %

Print Support Every  layers

Automatic Placement

*Only used if manual support is not defined*

Support Type

Support Pillar Resolution  mm

Max Overhang Angle  deg

Support Infill Angles

deg

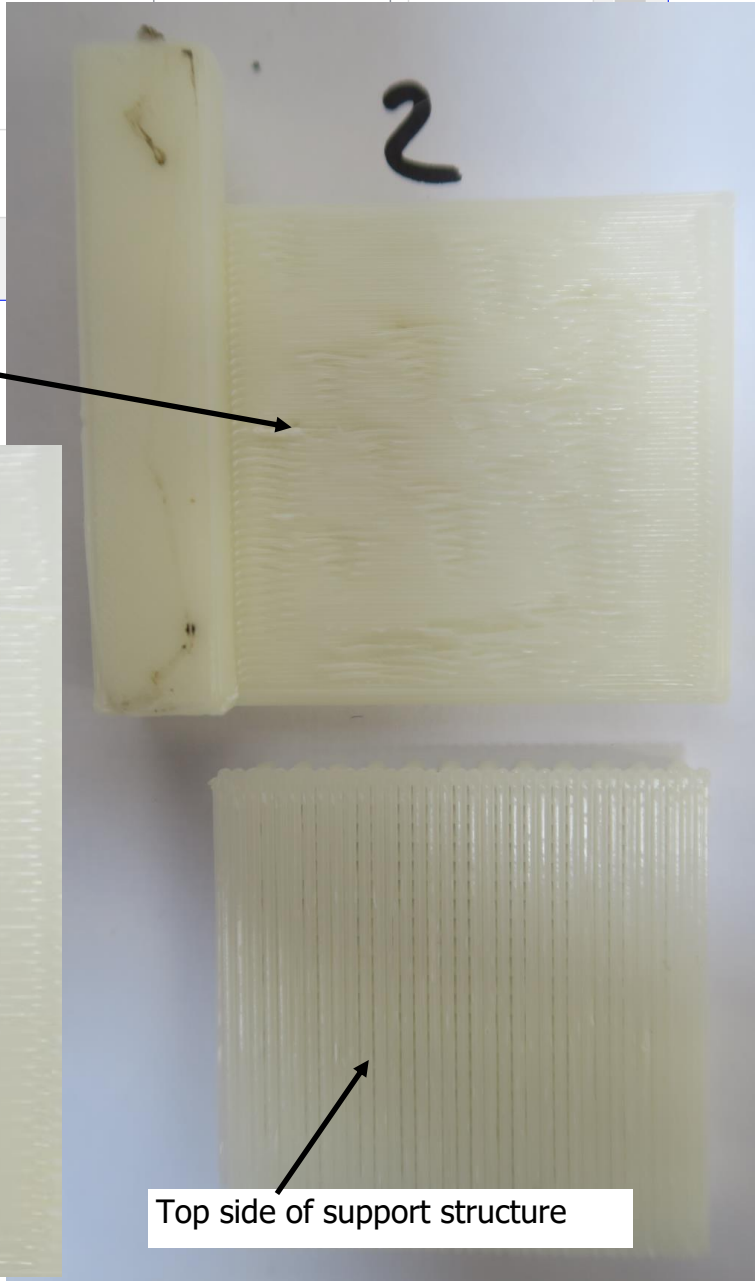
Separation From Part

Horizontal Offset From Part  mm

Upper Vertical Separation Layers

Lower Vertical Separation Layers

Underside of model, built directly on support structure



Top side of support structure

FFF Settings

Process Name:

Select Profile:

Auto-Configure for Material:

Auto-Configure for Print Quality:

General Settings

Infill Percentage:  15%  Include Raft  Generate Support

Extruder | Layer | Additions | Infill | **Support** | Temperature | Cooling | G-Code | Scripts | Other | Advanced

**Support Material Generation**

Generate Support Material

Support Extruder:

Support Infill Percentage:  %

Extra Inflation Distance:  mm

Dense Support Layers:

Dense Infill Percentage:  %

Print Support Every:  layers

**Separation From Part**

Horizontal Offset From Part:  mm

Upper Vertical Separation Layers:

Lower Vertical Separation Layers:

**Automatic Placement**

*Only used if manual support is not defined*

Support Type:

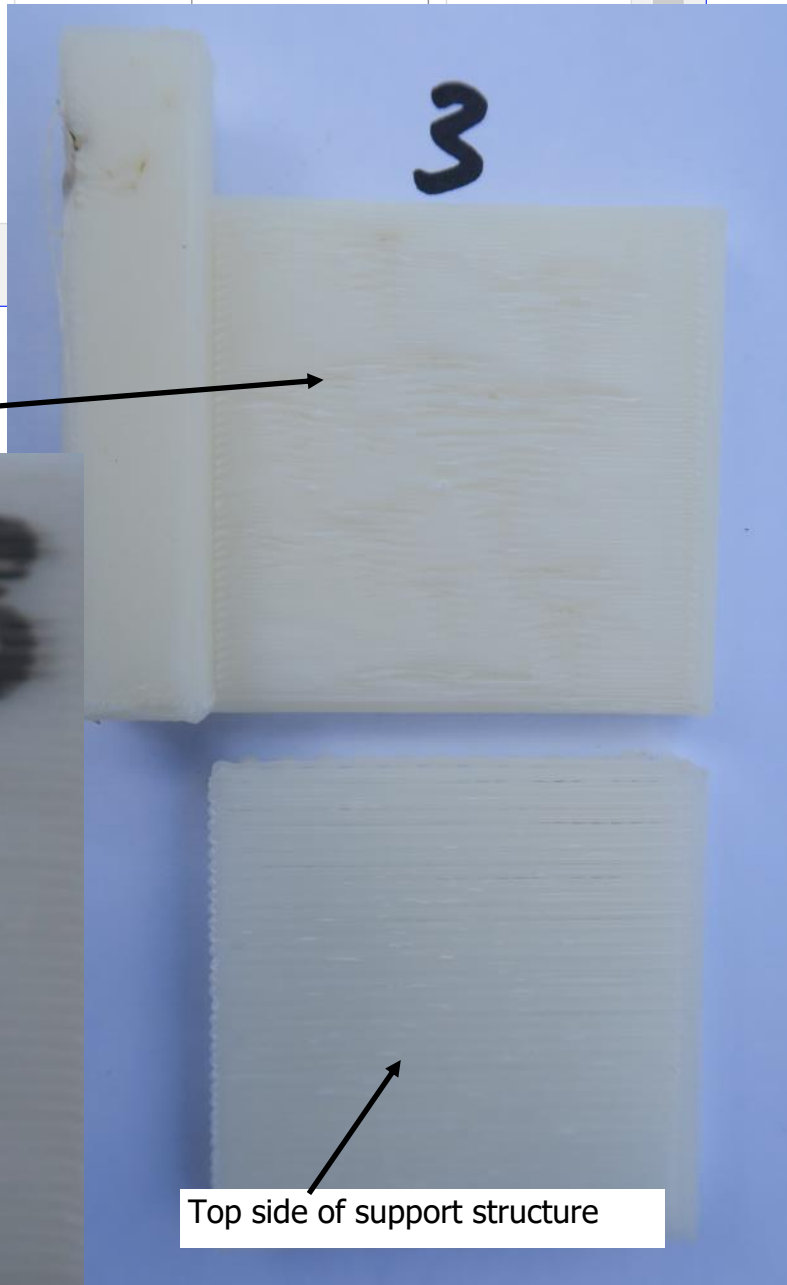
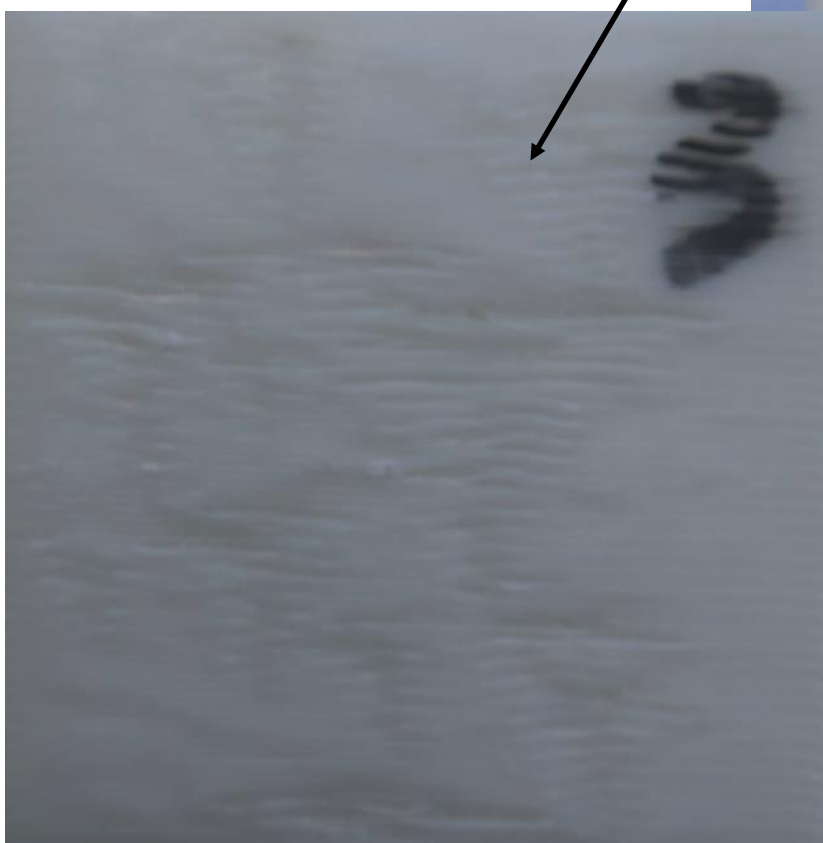
Support Pillar Resolution:  mm

Max Overhang Angle:  deg

**Support Infill Angles**

deg

Underside of model, built directly on support structure



Top side of support structure