


Models (double-click to edit)

- supSZ.R6s(4)
- supSZ.R6s(4)(2)
- supSZ.R6s(4)(3)

 Import

 Remove


 Center and Arrange


Processes (double-click to edit)

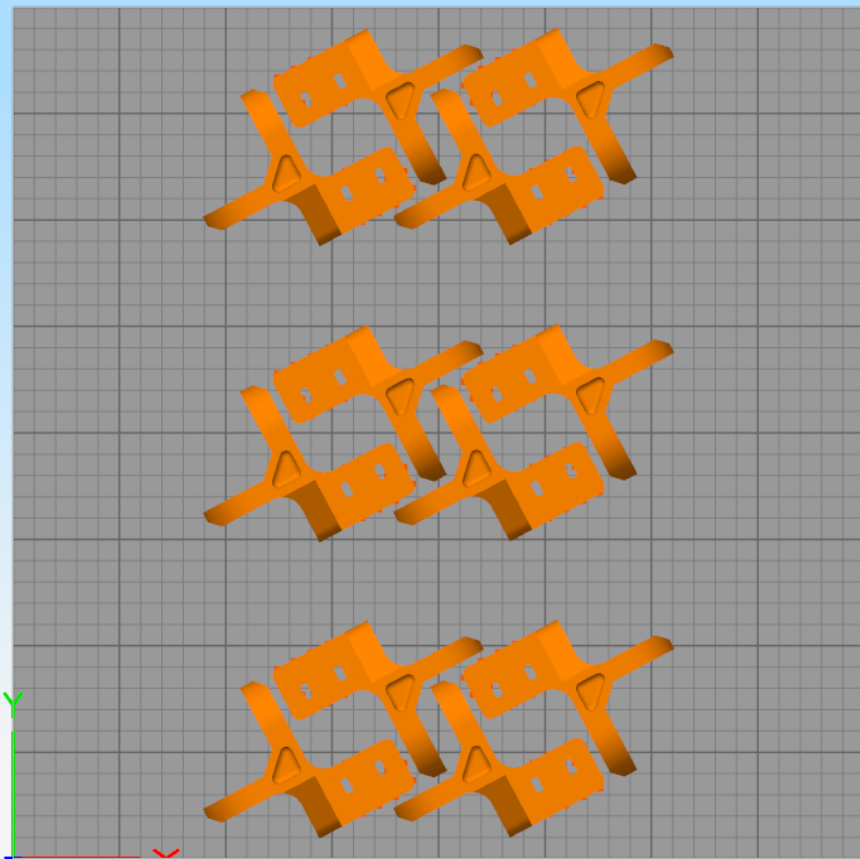
Name	Type
0.4.1	FFF
0.4.2	FFF
0.4.3	FFF
0.5.1	FFF
0.5.2	FFF
0.5.3	FFF
0.6.1	FFF
0.6.2	FFF
0.6.3	FFF
0.7.1	FFF
0.7.2	FFF
0.7.3	FFF
0.8.1	FFF
0.8.2	FFF
0.8.3	FFF

 Add

 Delete

 Edit Process Settings

 Prepare to Print!




Models (double-click to edit)

- supSZ.R6s(4)
- supSZ.R6s(4)(2)
- supSZ.R6s(4)(3)

 Import

 Remove


 Center and Arrange


Processes (double-click to edit)

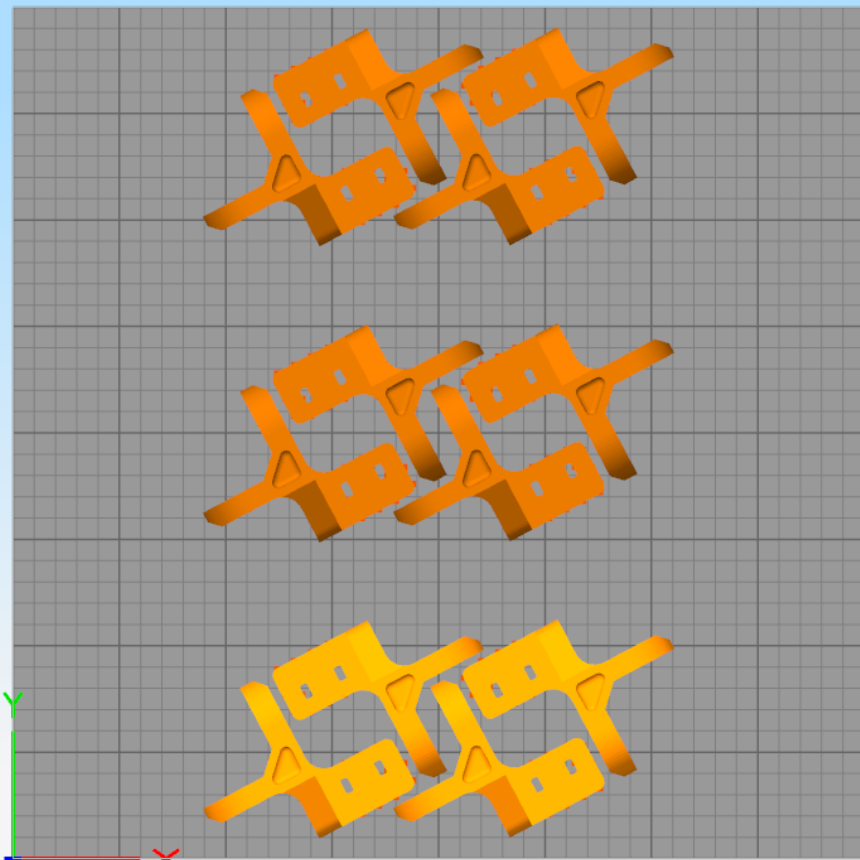
Name	Type
0.4.1	FFF
0.4.2	FFF
0.4.3	FFF
0.5.1	FFF
0.5.2	FFF
0.5.3	FFF
0.6.1	FFF
0.6.2	FFF
0.6.3	FFF
0.7.1	FFF
0.7.2	FFF
0.7.3	FFF
0.8.1	FFF
0.8.2	FFF
0.8.3	FFF

 Add

 Delete

 Edit Process Settings

 Prepare to Print!



## Models (double-click to edit)

- supSZ.R6s(4)
- supSZ.R6s(4)(2)
- supSZ.R6s(4)(3)



Import



Remove



Center and Arrange

## Processes (double-click to edit)

Name	Type
0.4 1	FFF
0.4 2	FFF
0.4 3	FFF
0.5 1	FFF
0.5 2	FFF
0.5 3	FFF
0.6 1	FFF
0.6 2	FFF
0.6 3	FFF
0.7 1	FFF
0.7 2	FFF
0.7 3	FFF
0.8 1	FFF
0.8 2	FFF
0.8 3	FFF



Add



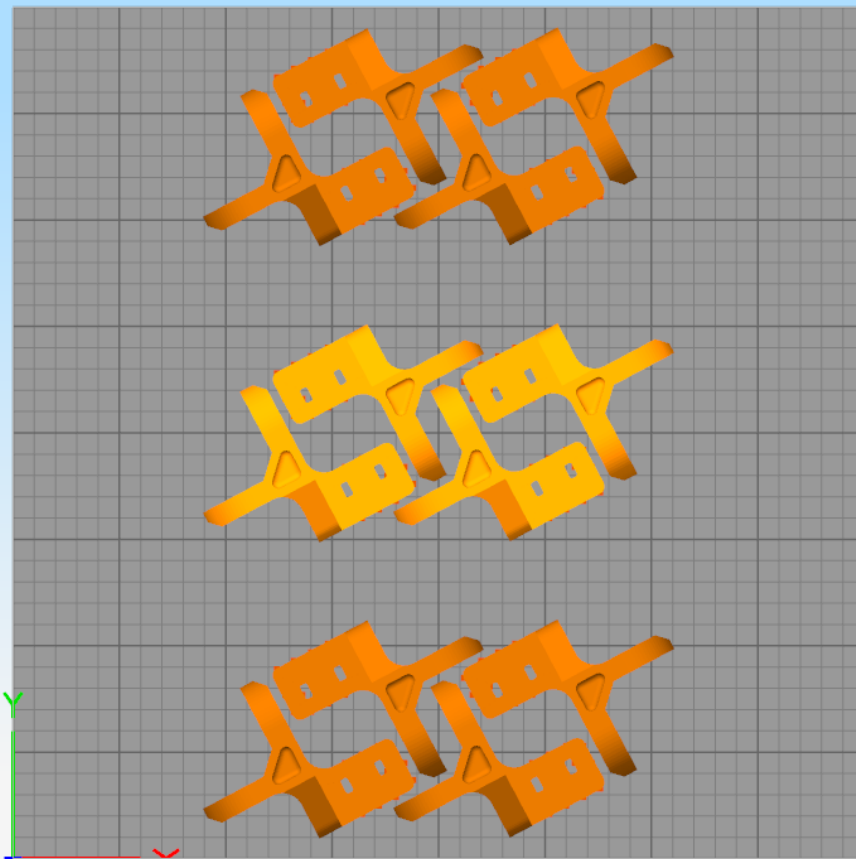
Delete



Edit Process Settings



Prepare to Print!



## Models (double-click to edit)

- supSZ.R6s(4)
- supSZ.R6s(4)(2)
- supSZ.R6s(4)(3)

Import

Remove

Center and Arrange

## Processes (double-click to edit)

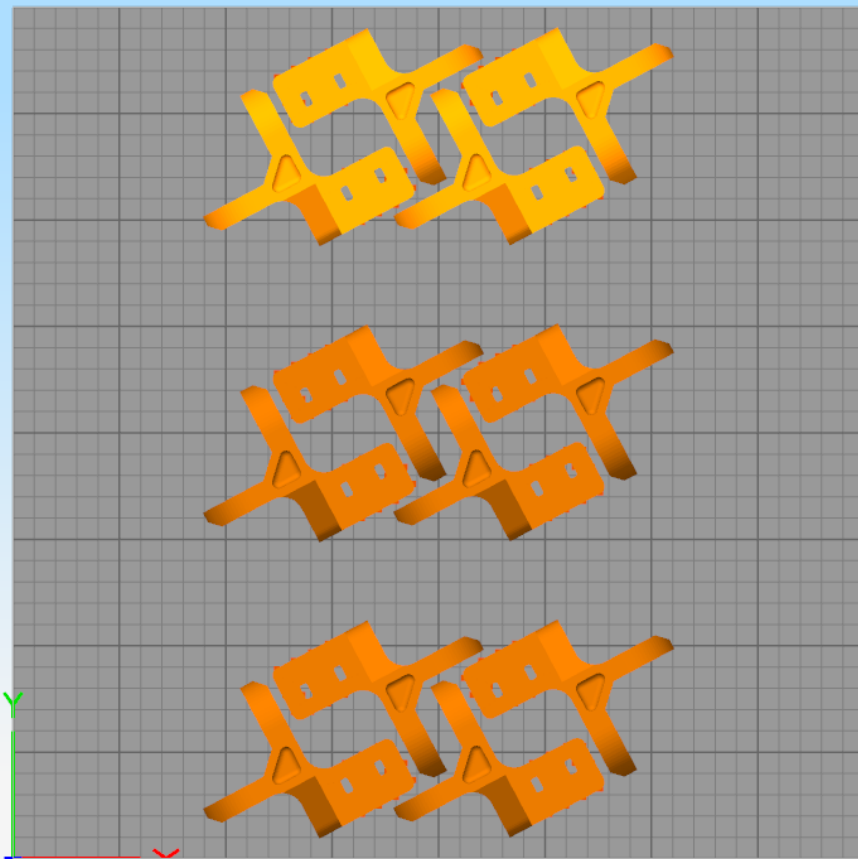
Name	Type
0.4.1	FFF
0.4.2	FFF
0.4.3	FFF
0.5.1	FFF
0.5.2	FFF
0.5.3	FFF
0.6.1	FFF
0.6.2	FFF
0.6.3	FFF
0.7.1	FFF
0.7.2	FFF
0.7.3	FFF
0.8.1	FFF
0.8.2	FFF
0.8.3	FFF

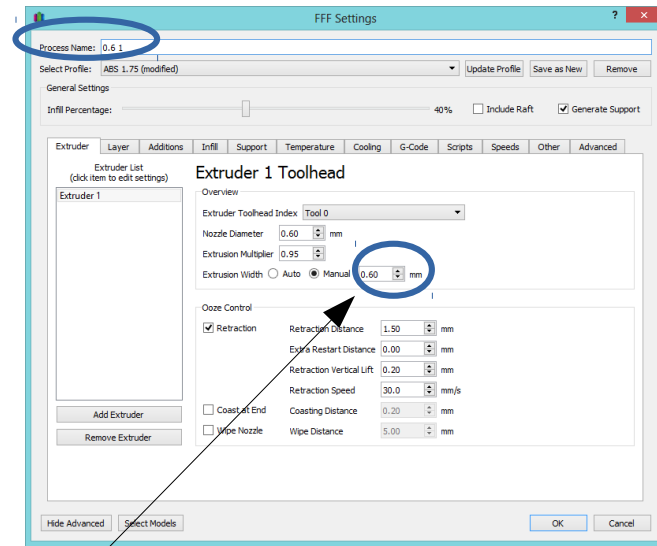
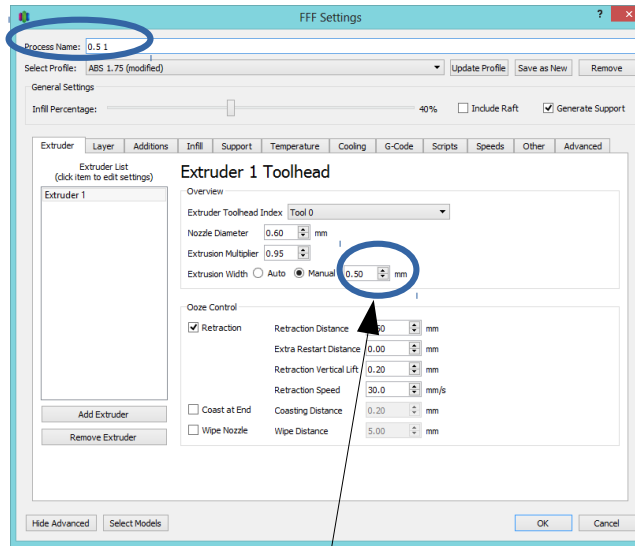
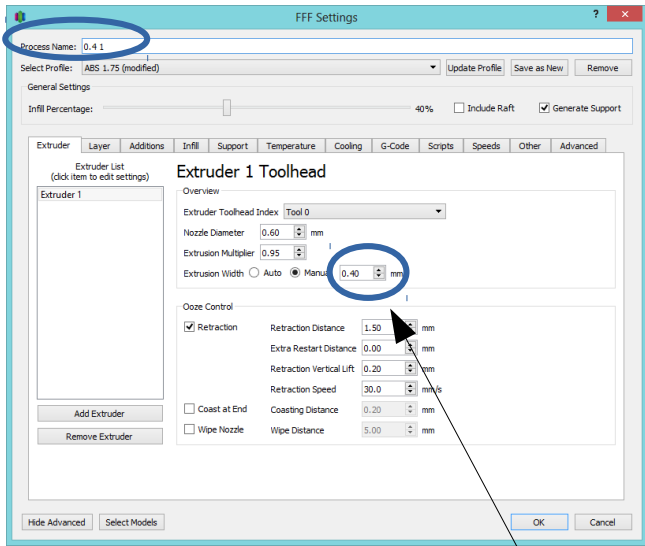
Add

Delete

Edit Process Settings

Prepare to Print!





Difference between processes

Models (double-click to edit)

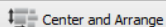
- supSZ.R6s(4)
- supSZ.R6s(4)(2)
- supSZ.R6s(4)(3)



Import



Remove



Center and Arrange

Processes (double-click to edit)

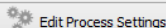
Name	Type
Process1	FFF
Process2	FFF
Process3	FFF
Process4	FFF
Process5	FFF
Process6	FFF
Process7	FFF
Process8	FFF
Process9	FFF
Process10	FFF
Process11	FFF
Process12	FFF
Process13	FFF
Process14	FFF
Process15	FFF



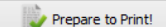
Add



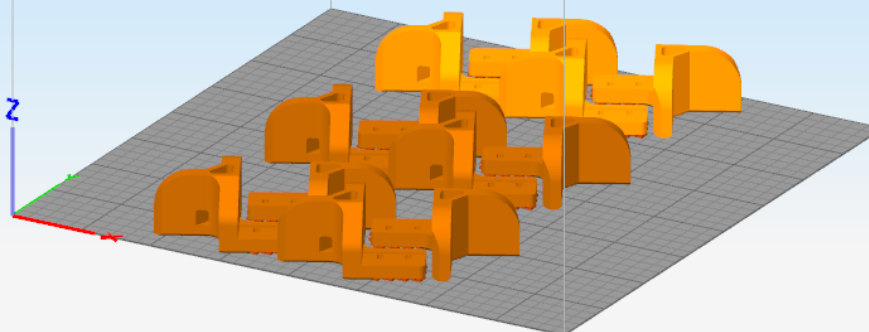
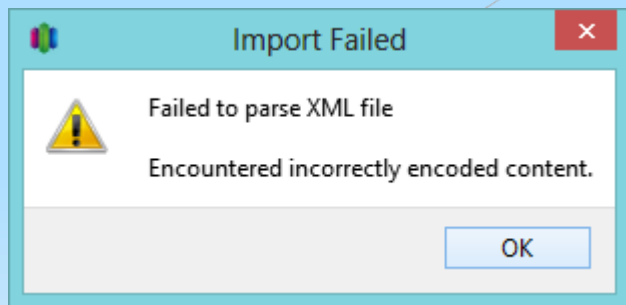
Delete



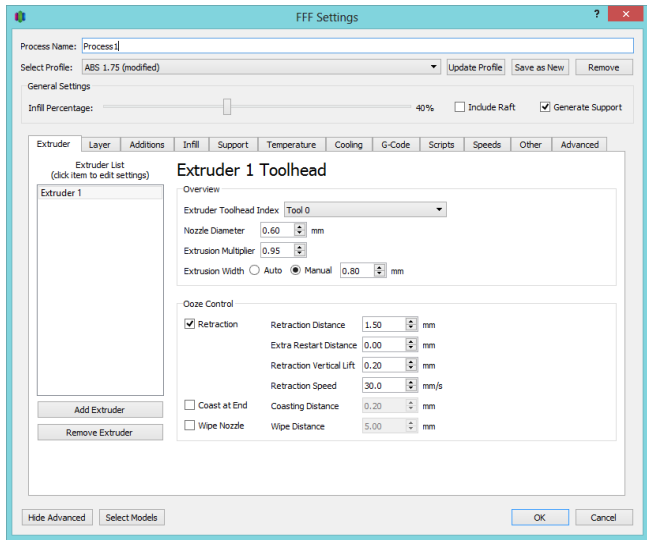
Edit Process Settings



Prepare to Print!



When I open the factory file it shows this error message for each process. And all process lost their original name and internal configs.



The configuration of all imported process from the factory file are the same of my last configured process before save the factory file.